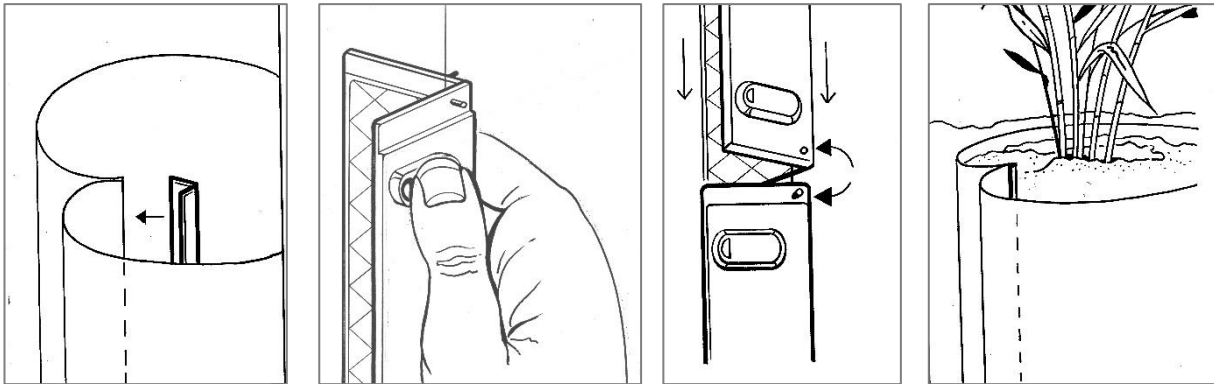


**Joining RootBarrier® products with RootBarrier® Click Connection**

- Slide the RootBarrier® as far as possible into the clamp
- Tighten the clamp by firmly pressing on the pressure points
- The clamp can be opened by firmly pushing a screwdriver into the hole

**Unfold in case of accidental folding**

- Take an oblong and narrow object and slide it behind one of the hooks. Push it back and the hook will pop out of its lock. Repeat this process on the remaining two hooks.

The RootBarrier® Click Connection is ready for use again.