

IMPORTANT

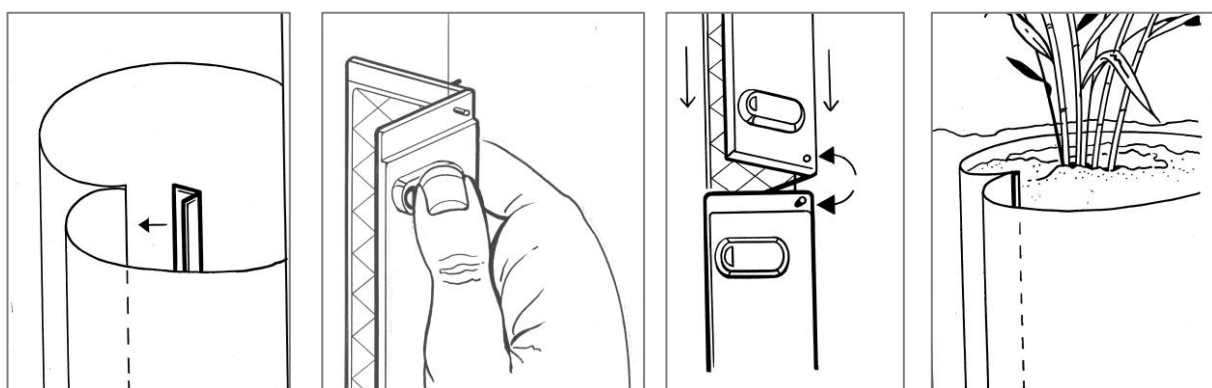
- Avoid damaging or creasing RootBarrier® 325, only then can impenetrability be guaranteed
- Keep the number of seams to a minimum for the best root protection
- RootBarrier® 325 should not stick out more than 2 cm above ground
- If there is any uncertainty about the installation or about the surroundings, a tree expert should be consulted

Installing RootBarrier® 325

- Dig a furrow as deep as the width of the RootBarrier® 325
- Place the RootBarrier® 325 vertically in the furrow with the **smooth side (coated side)** turned towards the roots
- Join sections of RootBarrier® 325 together with Click Connection or Butyl tape
- Fill up the furrow and compact the soil by pressure or with a vibratory plate

Joining RootBarrier® 325 with RootBarrier® Click Connection

- Slide the RootBarrier® as far as possible into the clamp
- Tighten the clamp by firmly pressing on the pressure points
- The clamp can be opened by firmly pushing a screwdriver into the hole

**Joining RootBarrier® 325 with RootBarrier® Butyltape**

- Make sure the root barriers are clean and dry
- Fold back both ends of the root barrier screens
- Join the root barrier screens at three points, as indicated in the drawing below
- Firmly press the ends together

